

Smart Environmental Fact Sheet

Graffiti on Solid Surface's

When graffiti is wet

Get to it early preferably before it is dry, often removable by turps , heavy duty cleaner full strength, or graffiti remover.

When dry

Sometimes a good water blast can remove this graffiti

Weaken paint by using turps or graffiti remover let it soak in then scrub or water blast and keep repeating process

Often all you can do is reduce the graffiti and paint over surface.

Graffiti on Porous Surface

When wet

Work fast use turps dilute scrub and dilute keep going if you are lucky it will disappear if not you have a good chance of reducing stain.

When dry

Use graffiti remover let it soak in. Scrub to penetrate paint water blast repeat process.

This is the worst surface to clean, not often successfully clean.

Most times all you can do is painted over.

Comment

Most graffiti is enamel paint, this will require the use of a paint etcher.

This will enable the acrylic paint to stick to the graffiti.

Brick



Response Options for removal

- Sandblasting
- Pressure washing
- Soda-blasting
- Painting
- Buffing/polishing

Ease of Cover-up Easy, medium or difficult

- Medium

Ease of Removal Easy, medium or difficult

- Difficult

Resources/Tips

What you can do/where you can go for help and action

- After graffiti is removed from the brick surface, apply an anti-graffiti laminate or paint to make future graffiti removal easier.

Concrete



Response Options for removal

- Sandblasting
- Pressure washing
- Soda-blasting
- Painting
- Sanding
- Buffing/polishing

Ease of Cover-up Easy, medium or difficult

- Easy

Ease of Removal Easy, medium or difficult

- Difficult

Resources/Tips

What you can do/where you can go for help and action

- After graffiti is removed from the concrete surface, apply an anti-graffiti laminate or paint to make future graffiti removal easier.

Traffic Signs



Response Options for removal

- Cleaning with chemicals - solvents
- Replacement
- Buffing/polishing

Ease of Cover-up Easy, medium or difficult

- Easy

Ease of Removal Easy, medium or difficult

- Medium

Resources/Tips

What you can do/where you can go for help and action

- After graffiti is removed from the sign, apply an anti-graffiti laminate or paint to make future graffiti removal easier.
- An option to consider is the replacement of damaged signs.

Challenges

- Check with manufacturer or retailer that the chemical will remove the graffiti vandalism without leaving shadows or a ghosting effect.
- Traffic signs may be reflectorised - special paint will be needed.

Plastic Rubbish Bins



Response Options for removal

- Cleaning with chemicals - solvents (methylated spirits)
- Buffing/polishing

Ease of Cover-up Easy, medium or difficult

- Possibly difficult - may discolour area cleaned

Ease of Removal Easy, medium or difficult

- Medium

Resources/Tips

What you can do/where you can go for help and action

- After graffiti is removed from the bin surface, apply an anti-graffiti laminate or paint to make future graffiti removal easier.

Plastic



Response Options for removal

- Cleaning with chemicals
- Painting
- Buffing/polishing

Ease of Cover-up Easy, medium or difficult

- Easy

Ease of Removal Easy, medium or difficult

- Medium to difficult

Resources/Tips

What you can do/where you can go for help and action

- After graffiti is removed from the plastic surface, apply an anti-graffiti laminate or paint to make future graffiti removal easier.

Challenges

- Check with manufacturer or retailer that the chemical will remove the graffiti vandalism without leaving shadows or a ghosting effect.

Wood



Response Options for removal

- Painting
- Sanding
- Buffing/polishing

Ease of Cover-up Easy, medium or difficult

- Easy

Ease of Removal Easy, medium or difficult

- Difficult

Resources/Tips

What you can do/where you can go for help and action

- After graffiti is removed from the wood surface, apply an anti-graffiti laminate or paint to make future graffiti removal easier.

Metal



Response Options for removal

- Cleaning with chemicals
- Painting
- Buffing/polishing

Ease of Cover-up Easy, medium or difficult

- Easy

Ease of Removal Easy, medium or difficult

- Easy to Medium

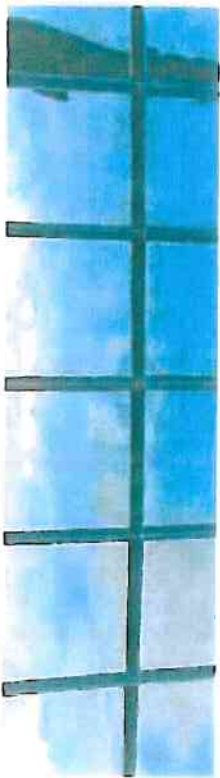
Resources/Tips What you can do/where you can go for help and action

- After graffiti is removed from the metal surface, apply an anti-graffiti laminate or paint to make future graffiti removal easier.

Challenges

- Check with manufacturer or retailer that the chemical will remove the graffiti vandalism from the metal surface without leaving shadows or a ghosting effect.

Glass



Response Options for removal

- Cleaning with chemicals (if marked)
- Buffing/polishing
- Replace (if etched)

Ease of Cover-up Easy, medium or difficult

- Not applicable

Ease of Removal Easy, medium or difficult

- Medium (depending if graffiti is marked or etched)

Resources/Tips What you can do/where you can go for help and action

- After graffiti is removed from the glass surface, apply an anti-graffiti laminate or paint to make future graffiti removal easier.

Challenges

- Check with manufacturer or retailer that the chemical will remove the graffiti vandalism without leaving shadows or a ghosting effect.
- Check with manufacturer whether the product is abrasive and will damage the glass surface.

SAFETY DATA SHEET

PRODUCT AND COMPANY IDENTIFICATION:

Kemsol WIPE OUT

A graffiti, ink, and paint remover without hazardous solvents.
NZFSA Approved C23 (all animal product except dairy).

CHEMICAL SOLUTIONS LTD

69 Aintree Ave,
Airport Oaks,
Auckland,
New Zealand.

PO Box 107-105, Airport Oaks, Auckland, New Zealand 2022.

Phone: (64-9) 255-5609
Fax: (64-9) 255-5610
E-mail: sales@kemsol.co.nz
Website: www.kemsol.co.nz

EMERGENCY CONTACT: Phone (64-9) 255-5609 8 am to 5 pm Mon to Fri
After Hours: National Poisons & Hazardous Chemical Information Centre: 0800-764-766 (0800-POISON)

SDS EFFECTIVE DATE: 23 February 2009

SDS PRINT DATE: 23 February 2009

HAZARD IDENTIFICATION:

Hazardous Substances Act (HSNO) 1996 & Classification Regulations 2001 for the product of this concentration:

- | | |
|--|---|
| 3.1D Combustible liquid. | 6.8A May damage fertility or an unborn child. |
| 6.1E May be harmful if swallowed or skin contact occurs. | 9.1C Harmful to aquatic life with long lasting effects. |
| 6.3B Causes mild skin irritation. | 9.3C Harmful to terrestrial vertebrates. |
| 6.4A Causes eye irritation. | |

Cleaning Products Combustible Products Group Standard: HSR No 2525

COMPOSITION & INFORMATION ON INGREDIENTS:

Solvents	> 50 %
Surfactants	10 – 20 %

FIRST AID MEASURES:

Contact with eyes:	Rinse eyes with running water holding back eyelids for 15 minutes. If irritation persists seek medical advice.
Contact with skin:	Wash affected area with copious volumes of water. If clothing is contaminated, remove and wash the affected skin area. If irritation or swelling occurs seek medical advice.
After inhalation:	If the patient is subject to vapourisation, remove from exposure and seek medical advice.
After ingestion:	Do Not Induce Vomiting. Administer 2 glasses of water or milk, and if discomfort persists seek medical advice.
Advice to Doctor:	Treat patient for acute exposure to materials with toxic effects. Have this SDS or a product label on hand.

FIRE FIGHTING MEASURES:

This product is combustible. It will not ignite a fire but will burn if exposed to a fire source. Avoid electrical ignition sources. Containers subject to heat from a fire may explode scattering burning contents. Where possible remove containers from the path of the fire. Otherwise cool with water spray to avoid heating.
Firefighters wear SCBA and chemical resistant suits.
Foam, CO₂, or chemical dry powder to extinguish a local fire. Water spray on large fires only.

ACCIDENTAL RELEASE MEASURES:

Spills on floors will produce a slippery surface. Shut off all possible sources of electrical ignition.
Contain minor (less than 100 litres) from local drainage with any suitable bund or barrier. Where the product is water soluble, dilute with water, neutralise if necessary, and then clean up with mops or any suitable absorbant inert material such as Mineral Sponge, paper, rags, sand, or soil. Pack absorbed waste material into open-top drums, which can be closed, for waste disposal.
Large spills from drums and IBC's should be contained from drains and diluted with water where possible. Alert the local Fire Brigade.
Collect absorbed material in drums which can be closed and sent to landfill. If material does enter drains, alert the local drainage authorities.

HANDLING AND STORAGE:

Store containers, with secure closures, in sites where they can be kept cool and away from heat and ignition sources.
Handle to prevent damage to containers. Should packaging be damaged, repack into clean and dry containers of the same type and mark the product name carefully on the container.
Always replace lids and caps after using the product. Return all packages to safe storage as soon as possible after use.

EXPOSURE CONTROLS & PERSONAL PROTECTION:

Exposure controls:	No data is available for Kemsol Wipe Out.
Eye protection:	Safety glasses.
Protective clothing:	Chemically impregnable gloves, work shoes, protective work clothes (an apron or overalls).
Respiratory protection:	Not required for the regular use of this product. If the liquid is being sprayed or vaporised, a face shield and/or respirator must be worn. These operations should be carried out by trained personnel only.
Ventilation:	Where spraying or vaporising is being carried out, ensure there is ready access to eyewash units and safety shower. Also adequate ventilation is provided in the work space.

PHYSICAL AND CHEMICAL PROPERTIES:

Appearance	Clear pale yellow liquid
Odour	Slight solvent
pH	Not applicable as no water is in the product
Flash Point	88 °C
Ignition Point	> 400 °C
Specific Gravity	1.04 ± 0.01
Refractive Index	1.437 ± 0.005 58 Bx
Viscosity	Not applicable
Relative Foam	Not applicable
Solubility in water	Completely in all proportions.

STABILITY AND REACTIVITY:

Kemsol Wipe Out is considered stable under normal storage conditions.
Avoid contamination with oxidising substances.
Hazardous polymerisation will not occur.
Combustion will release mostly oxides of carbon and nitrogen.

TOXICOLOGICAL INFORMATION:

No data is available for Kemsol Wipe Out

ECOLOGICAL INFORMATION:

No data is available for Kemsol Wipe Out
Solvents and surfactants are classed Readily Biodegradable according to the European Union Detergents Regulations #648/2004.

DISPOSAL CONSIDERATIONS:

Dispose of in accordance with local regulations by recognised waste disposal experts. Incineration is the preferred method.
Spilled liquids must be absorbed by neutral materials and packed in containers which can be sealed for removal.
Large spills will require suctioning into suitable tanks, and if not recoverable, disposed of through recognised waste disposal experts.
Used containers should be rinsed, not recycled, but disposed of in landfill or incinerated.

TRANSPORT INFORMATION:

NZ Land Transport Rule: Dangerous Goods Rule 2005 Classified as not dangerous for Land Transport in New Zealand

NZ REGULATORY INFORMATION:

Hazardous Substances Act (HSNO) 1996 & Classification Regulations 2001 for the product of this concentration:

3.1D Combustible liquid.	6.8A May damage fertility or an unborn child.
6.1E May be harmful if swallowed or skin contact occurs.	9.1C Harmful to aquatic life with long lasting effects.
6.3B Causes mild skin irritation.	9.3C Harmful to terrestrial vertebrates.
6.4A Causes eye irritation.	

Cleaning Products Combustible Products Group Standard: HSR No 2525
NZFSA Approved C23 (all animal product except dairy).

OTHER INFORMATION:

Formulation reference and version number: R1 – 25 Version 1.
This SDS was prepared from data available on 23 February 2009.
This SDS was printed on 23 February 2009.
This SDS will be reviewed no later than 23 February 2014..

END OF THIS SAFETY DATA SHEET

20-47

Graffiti Remover Spray



[Refer a friend](#)

[Product query](#)

[Larger image](#) Move mouse over the image to magnify

Ideal for removing spray paint and graffiti from almost any surface.

Graffiti Remover is ideal for removing spray paint and graffiti from almost any surface. Also useful for removing unwanted paint marks from roads, footpaths, warehouse floors and car parks.

A highly effective formula that removes paint from asphalt, pavers, brick, stucco, siding, concrete, and metal. Safely removes varnish as well.

The gel-like remover adheres to vertical surfaces and becomes more effective the longer it is left on the surface. Stubborn marks may require agitating by brush. Neutralise by rinsing with water.

Spray on and wash off

You might also be interested in ...



[Stripe Inverted Tip Marker Paint](#)

SKU : 20-600

Spot Marking Spray Paint - With NEW Safety Cap!

[More info](#)

P 0800 500 147

Call Our Knowledge Centre for Free Advice

F 0800 500 148

E sales@vanguardgroup.co.nz

Send Us a quick message with your requirements