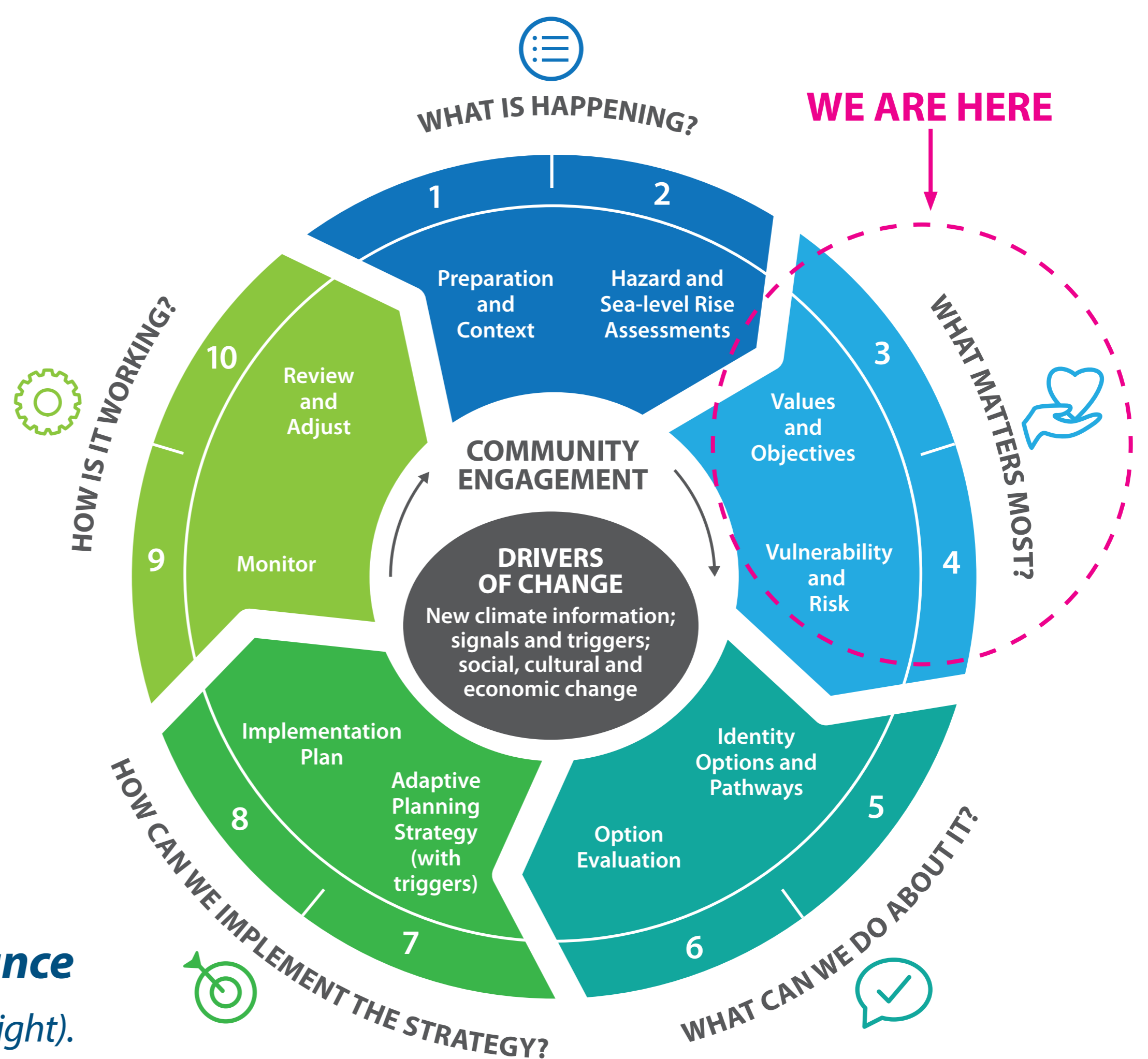


# How do we Plan to Manage the Shoreline?

**New Zealand's Coastal Policy Statement 2010** recognises that the changing climate will increase risks to life and property within the coastal zone and requires Councils to proactively manage coastal hazards over the next 100 years.

In June and August 2018 respectively, TCDC adopted the *Thames-Coromandel Coastal Management Strategy* and *Thames-Coromandel Coastal Hazards Policy*, committing to the preparation of **Shoreline Management Plans** (SMPs) for the District. SMPs are intended to provide a sustainable framework for coastal hazard risk management, addressing more immediate issues but considering them in the context of how we may need to adapt in the longer-term.

The approach we have adopted is based on the Ministry for the Environment's 2017 **Coastal hazards and climate change: Guidance for local government** (illustrated in the cycle to the right).



We are currently at the 'WHAT MATTERS MOST?' stage, where we are using Community Open Day and Coastal Panel input (Step 3 - values and objectives) to understand what matters most in combination with the coastal hazard information (from Step 2) to define vulnerability and risk (Step 4). This will allow us to then be able to identify appropriate community-led adaptation options and pathways. Ultimately, this process seeks to enable resilient coastal communities to enjoy our coastline now and into the future.

**WE ARE SEEKING YOUR FEEDBACK NOW  
on what you value most and what concerns you –**

Please attend our upcoming community day on **Tuesday 26th at the Whitianga Town Hall** to view and discuss coastal hazard information.

We will come back to you again to discuss Adaptation Options in the middle of the year. Our website also includes more information: [tcdc.govt.nz/coastal](http://tcdc.govt.nz/coastal).

In the meantime, please feel free to contact us at [ourcoast@tcdc.govt.nz](mailto:ourcoast@tcdc.govt.nz)