

What can you recycle on the Coromandel?



What goes in your wheelie bin?

Paper, Cardboard, Cans & Plastic



Paper & Cardboard



Aluminium and tin cans

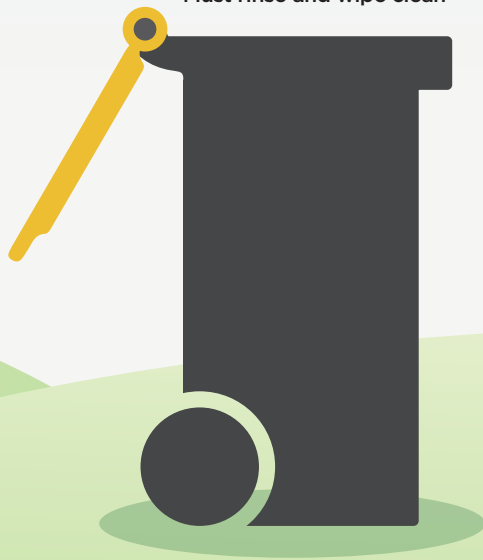


Only Plastic

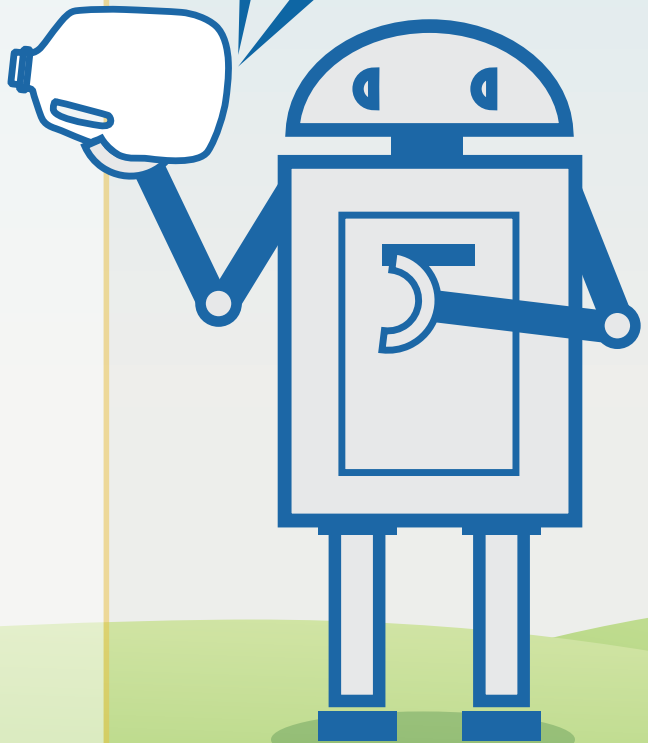


(Other numbers or no number, put it in the rubbish)

Must rinse and wipe clean



Look for the numbers on the bottom of the plastics





What goes in your TCDC crate?

Glass only



Glass Bottles and Glass Jars

Must rinse clean and do not over fill crate



Items to keep out of your recycling

When in doubt, keep it out



Household rubbish



Nappies and sanitary items



Plastics 3 to 7 or without a number



Food scraps and garden waste



Building waste



Polystyrene



Pyrex, glasses, light bulbs, mirrors and windows



Ceramics



Foil packaging



Tetra Pak cartons



Electronics and batteries



Clothes and shoes