

Representation Review 2024

FEEDBACK ON INITIAL PROPOSAL

Have your say | **Kōrero Mai**

FRIDAY 21 JUNE TO FRIDAY 2 AUGUST 2024



KEY INFORMATION

The Council is seeking your views on the representation review ahead of the October 2025 local body elections.

The preliminary feedback in March was the first part of a process seeking community input on representation. Council has considered the input received from that survey, explored options, and agreed to an initial proposal in June. We are keen to hear from our communities to understand how you feel about our initial proposal.

When is the public feedback period?

You can give your feedback from Friday 21 June to Friday 2 August.

What we're proposing:

- an additional councillor to reflect the introduction of a Māori Ward; and
- a minor boundary change between the South East General Ward and Thames General Ward, and the Tairua-Pāuanui Community Board and Thames Community Board to better reflect communities of interest. The area of Neavesville is accessed via one road from the western side of the district. It's considered that the constituents of Neavesville better identify with the Thames General Ward and Thames Community Board area, than with the South East General Ward and Tairua-Pāuanui Community Board area.

You can find full information on these proposed changes below.

How can I give feedback?

You can give feedback in the following ways:

- [Give your feedback online at **tcdc.govt.nz/repreview**](https://www.tcdc.govt.nz/repreview)
- [Pick up a hard copy of the submission form](#) from one of our Council service centres or libraries, fill it out, and:
 - o Post to: Rep Review feedback, Thames-Coromandel District Council, Private Bag 1001, Thames 3450
 - o [Email to **governance.services@tcdc.govt.nz**](mailto:governance.services@tcdc.govt.nz)
 - o Deliver in person to one of our Council service centres at Thames, Coromandel Town, Whitianga and Whangamatā

WHAT'S THE PROCESS?



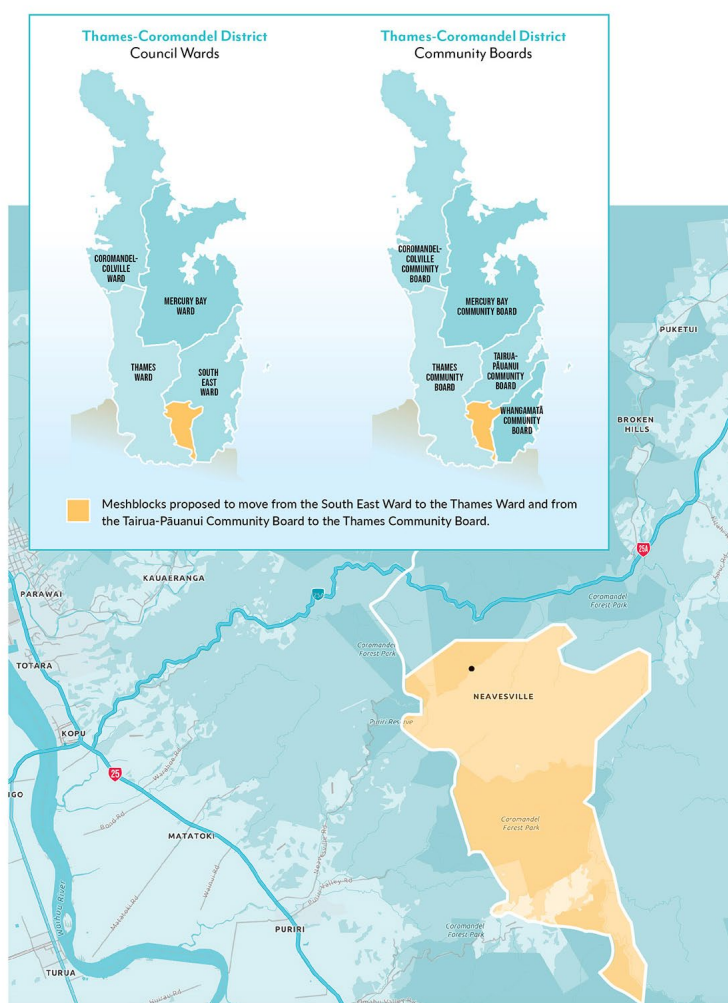
www.tcdc.govt.nz/repreview

Details on the initial proposal

The initial proposal for the district is:

- Mayor, elected at large;
- 10 Councillors (9 general ward councillors and 1 Māori ward councillor);
- 5 wards (4 general wards and one district-wide Māori ward);
 - o Coromandel-Colville Ward – Represented by one Councillor.
 - o Mercury Bay Ward – Represented by three Councillors.
 - o South Eastern Ward – Represented by two Councillors.
 - o Thames Ward – Represented by three Councillors.
 - o Māori Ward – Represented at large.
- 20 Community Board members elected from five Community Boards;
 - o Coromandel-Colville Community Board – Four Board Members and one appointed of the Council representing either the Coromandel-Colville General Ward or the Thames-Coromandel Māori Ward.
 - o Mercury Bay Community Board – Four Board Members and three appointed members of the Council representing either the Mercury Bay General Ward or the Thames-Coromandel Māori Ward.
 - o Tairua-Pāuanui Community Board – Four Board Members and two appointed members of the Council representing either the South East General Ward or the Thames-Coromandel Māori Ward.
 - o Whangamatā Community Board – Four Board Members and two appointed members of the Council representing either the South East General Ward or the Thames-Coromandel Māori Ward.
 - o Thames Community Board – Four Board Members and three appointed members of the Council representing either the Thames General Ward or the Thames-Coromandel Māori Ward.

Thames-Coromandel District Council Proposed Ward and Community Board boundary changes



Proposed ward and community board boundaries

The above arrangements reflect the status quo, with a minor boundary change between the Thames General Ward and the South East General Ward and the Thames Community Board and Tairua-Pāuanui Community Board, shifting the area of Neavesville and its surrounds to better reflect communities of interest.

ARRANGEMENT OF COUNCILLORS

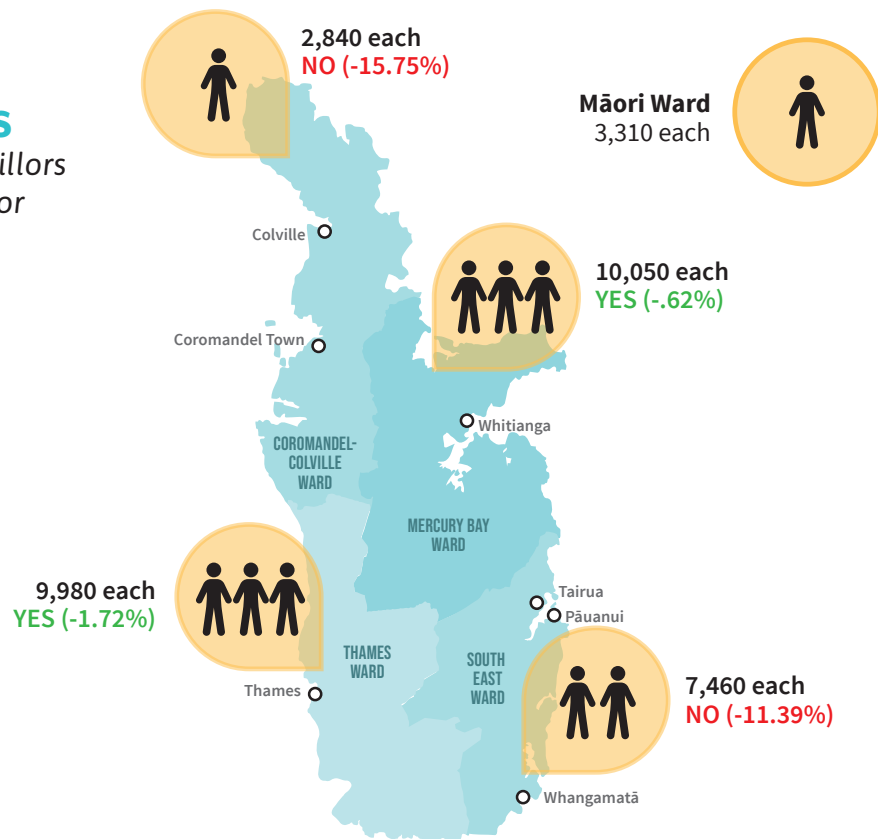
We are proposing to increase to 10 Councillors, keep the current general ward boundaries, with one Māori Ward (one Councillor) and four general wards (nine Councillors).

The five wards, the number of councillors per ward, the ward populations (estimated as at 30 June 2023) and the population ratio per councillor are as follows:

Ward	Population	No. Councillors	Average	% Variation
Coromandel-Colville General	2,840	1	2,840	-15.75%
Mercury Bay General	10,050	3	3,350	-0.62%
South East General	7,460	2	3,730	11.39%
Thames General	9,980	3	3,326	-1.72%
Thames-Coromandel Māori	3,310	1	3,310	n/a

ARRANGEMENTS

9 General Ward Councillors
1 Māori Ward Councillor



Proposed Maps ward and community board boundaries

Thames-Coromandel District Council Wards



Thames-Coromandel District Community Boards



Proposed Community Board boundaries and names

Coromandel-Colville Community Board



Mercury Bay Community Board

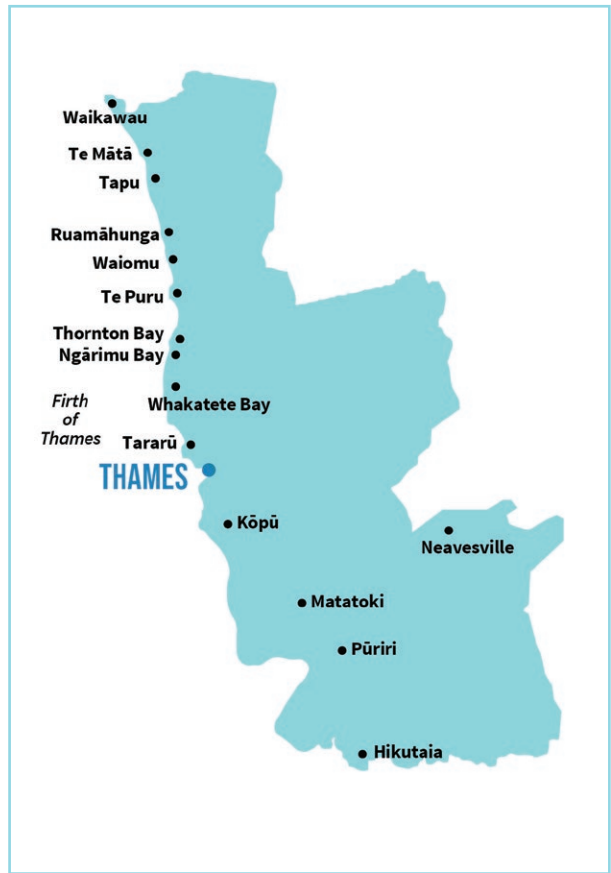


Proposed Community Board boundaries and names

Tairua-Pāuanui Community Board



Thames Community Board



Whangamatā Community Board



For more information on our wards, Community Boards and Council, visit www.tcdc.govt.nz/ourcouncil

What are Representation Reviews?

A representation review addresses the total number of councillors there should be for the district or region and the way they are elected.

This involves deciding whether councillors are elected from wards, or by a mix of both wards and 'at large'.

A review also covers the boundaries of wards, Community Boards and their names.

Why have a Representation Review?

To ensure councils retain effective and fair representation for the community, all territorial authorities are required under the Local Electoral Act 2001 to review their representation arrangements at least every six years. The last representation review was undertaken in 2021 however, as Council resolved to establish Māori Wards for the 2025 local elections we must undertake a representation review in 2024.

Representation reviews offer a chance for us to look at the current local boards and wards to make sure that they are represented fairly and effectively.

What are wards?

Wards are areas of a district identified for electoral purposes. They work in the same way as seats in a general election.

Currently in the Thames-Coromandel we have a ward system where candidates stand in a ward area and people living in that area get to vote for them.

Our four election wards are: Thames, Coromandel-Colville, Mercury Bay, South Eastern. Currently people can only vote for candidates in their ward, but everyone gets to vote for who they want as Mayor.

Although candidates stand for their ward area, when voted on to council, councillors swear an oath to work for the district as a whole.

You can find out more about our current ward structure on our website at www.tcdc.govt.nz/wards

How do we keep things fair?

The number of councillors is based on population equity, generally it means each elected member represents about the same number of people.

What is a Māori ward?

Māori wards provide a way for Māori to contribute to decision-making and have representation at council. Thames-Coromandel District Council Māori ward/s will represent Māori in our community so that our decision-making is fairer and more inclusive. Electors enrolled on the Māori electoral roll will vote for candidates standing for Māori wards.

Similarly, electors enrolled on the general electoral roll will vote for candidates standing for general wards. A Māori ward candidates will become a councillor at council. Councillors have a responsibility to represent their communities.

Māori ward councillors will have a particular responsibility to represent people of Māori descent and bring forward Māori views and aspirations. However, they also represent the entire community in our District. “Wards” are the parts of a council area that have been determined by population and communities of interest. These can be either general wards or Māori wards.

You can find out more at www.tcdc.govt.nz/maoriwardvote or www.votelocal.co.nz

Structure for electing Councillors

What we need to consider

The review will consider how Councillors can be elected and whether we vote for them ‘at large’, by ward system or a mixture of both.

At large: Councillors can be elected ‘at large’ which means they are elected by all electors on the General electoral roll and the Māori electoral roll within the district.

The ‘at large’ system can lead to a situation where a large number of candidates are elected from a specific area of the district, resulting in an imbalance in the representation of different areas.

Elected from wards: Councillors can be elected from wards. The ‘elected from wards’ option could include councillors elected from a ward (or wards) within the district (like our current arrangement) and/or a ward covering the entire district (district-wide ward).

In this structure:

- Electors on the General Electoral Roll vote for the Mayor, Councillors in their respective Wards, and their respective community board members.
- Electors on the Māori Electoral Roll can vote for the Mayor, Councillor/s who are standing for Māori ward/s, any Councillors who are elected ‘at large’, and their respective community board members.

Mixed model: Councillors can be elected from a mixture of wards and ‘at large.’

In this structure:

- Electors on the General Electoral Roll vote for Mayor, councillors in the General Ward(s) and respective community board members.
- Electors from the Māori Electoral Roll vote for Mayor, councillors from the Māori Ward(s) and respective Community Board members.
- All voters, on the General and Māori Electoral Roll, can vote for councillors ‘at large.’

A mixed system where some Councillors are elected from Wards, and some from across the District can be seen to provide a balance between representation of District-wide interests and local concerns.

If choosing a ward-based system, the number of Councillors needs to comply with the population vs member ratio requirements.

What decisions have already been made?

At its 8 August 2023 meeting, Council resolved to retain First Past the Post Electoral System (the way votes are counted). This means the highest polling candidates will be elected.

At its 31 October 2023 meeting, Council resolved to establish at least one Māori Ward. This decision to have at least one Māori Ward will not be reconsidered however how Māori Ward/s are structured will be considered through this process.

At its 13 June 2024 meeting Council resolved to adopt as its initial proposal for the review of representation arrangements for at least the 2025 triennial elections



To share your feedback on the proposed changes, please visit:

www.tcdc.govt.nz/repreview

If you have any questions, you can email governance.services@tcdc.govt.nz

