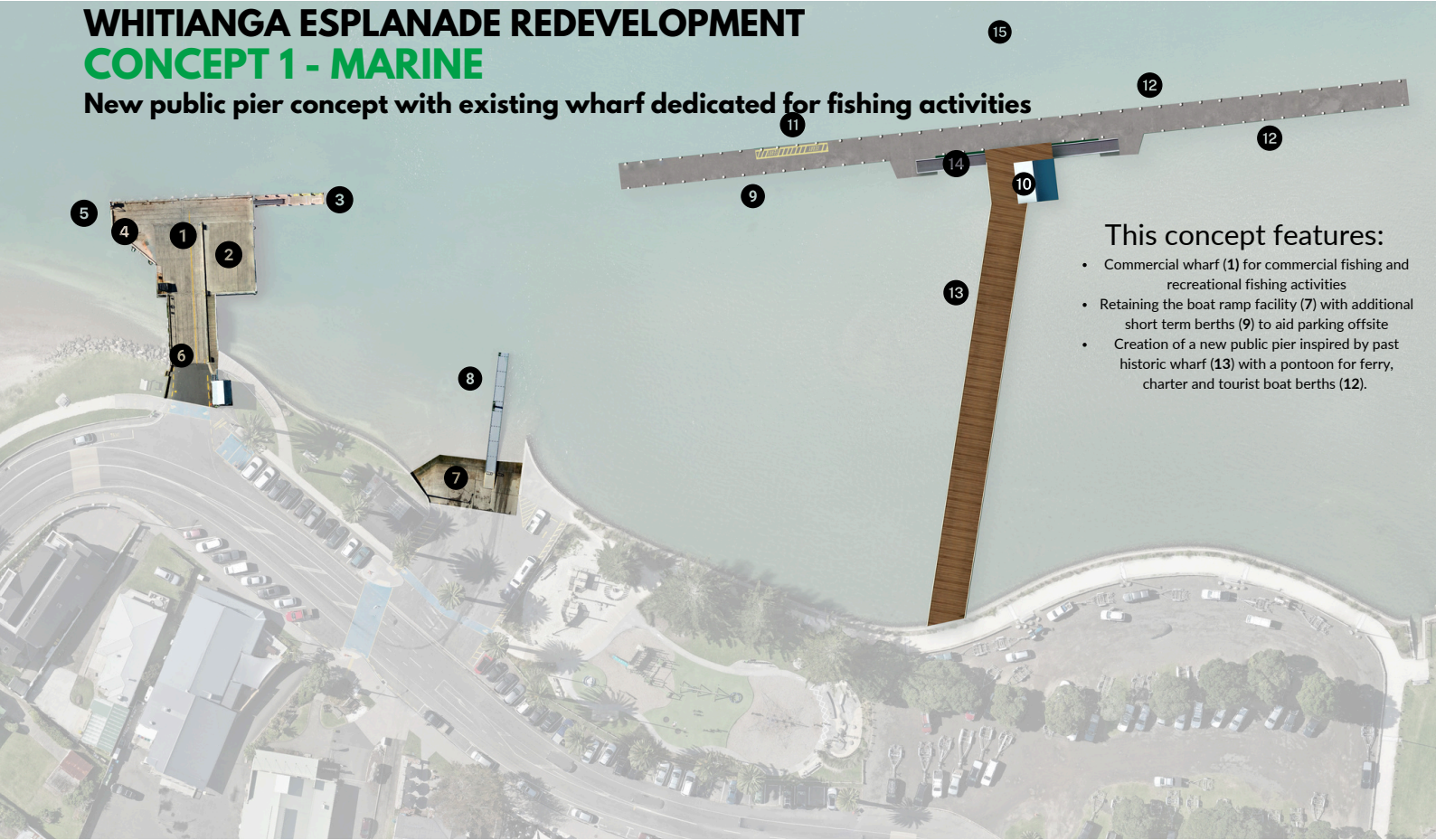


WHITIANGA ESPLANADE REDEVELOPMENT

CONCEPT 1 - MARINE

New public pier concept with existing wharf dedicated for fishing activities



This concept features:

- Commercial wharf (1) for commercial fishing and recreational fishing activities
- Retaining the boat ramp facility (7) with additional short term berths (9) to aid parking offsite
- Creation of a new public pier inspired by past historic wharf (13) with a pontoon for ferry, charter and tourist boat berths (12).

1 Existing wharf dedicated to fishing

2 Removal of shelter to create space

3 Pontoon renewal 2025

4 Game fish weight station

5 Fenders with catwalk

6 Barrier arm for authorised vehicle access

7 Existing all tide boat ramp remains

8 Existing plastic pontoon remains

9 Short term berths for trailer boats to aid parking off site

10 Public shelter

11 Dedicated ferry berth

12 Charter boat and tourist boat berths

13 New public pier approx 80m long x 6m wide - timber decking. 5T load rating

14 Aluminium gangway

15 Relocation of 3 x moorings

Marine Concept Objective

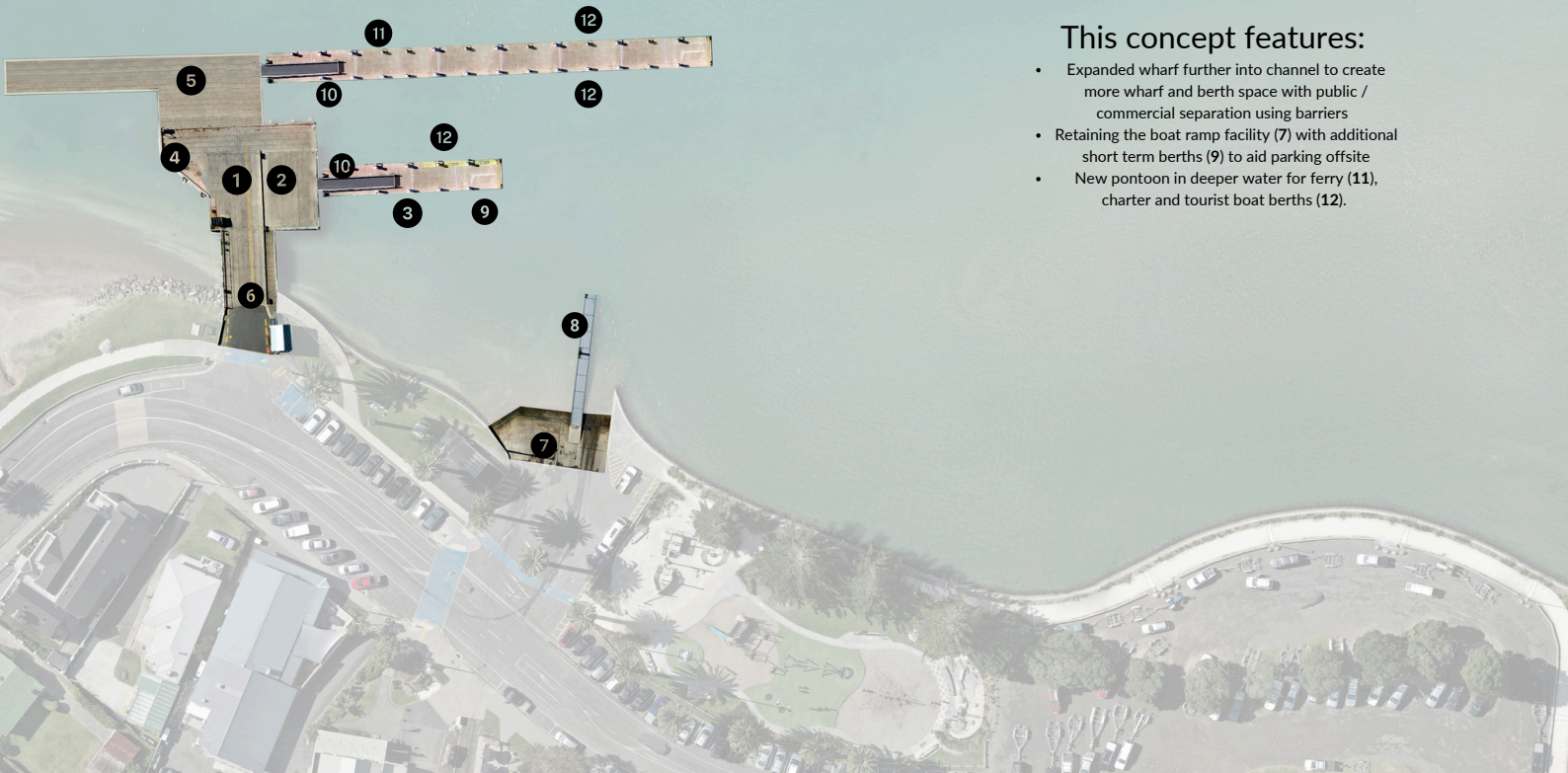
"By June 2031, complete the development and construction of a dedicated ferry berth, a separate pontoon or pier for tourist and fishing charter boats, and safe access for public and recreational fishing, public access, and game fishing weigh-ins within the allocated budget of the Long-Term Plan (LTP) to enhance the Whitianga Esplanade Waterfront for tourism and local community use."



WHITIANGA ESPLANADE REDEVELOPMENT

CONCEPT 2 - MARINE

Expand existing wharf into channel and increase pontoon size



This concept features:

- Expanded wharf further into channel to create more wharf and berth space with public / commercial separation using barriers
- Retaining the boat ramp facility (7) with additional short term berths (9) to aid parking offsite
- New pontoon in deeper water for ferry (11), charter and tourist boat berths (12).

1 Existing wharf

2 Removal of shelter to create space

3 Pontoon relocated from renewal 2025, local dredging

4 Game fish weight station

5 Expanded commercial wharf area 24T rating suitable for trucks

6 Barrier arm for authorised vehicle access

7 Existing all tide boat ramp remains

8 Existing plastic pontoon shortened

9 Short term berths for trailer boats to aid parking off site

10 Aluminium gangway

11 Dedicated ferry berth

12 Charter boat and tourist boat berths

WHITIANGA ESPLANADE REDEVELOPMENT

CONCEPT 3 - WATERFRONT

Multi-use open space waterfront - trailer parking at Taylors Mistake



This concept features:

- Creation of multiuse public open space (1) on waterfront for public open space, parking and events with same trailer parking as existing. Grass concrete paver or reinforced grass surface.
- Playground (3) remains in current position with barrier fence (4) adjoining boat ramp.
- Future toilet location (6) to service playground and new pier.
- Creation of an all season surface (concrete grass pavers or reinforced grass) at Taylors Mistake (2) for around 22 trailer parks and events.
- Traffic safety improvements including raised tables (5)

1 Multiuse open space reserve for events, parking and amenity. Surface to be grass pavers or reinforced grass. No change to existing parking numbers.

2 All season parking at Taylor's Mistake. Approx. 22 trailer parks on grass paver or reinforced grass surface.

3 Existing playground

4 Barrier between playground and ramp

5 Traffic safety measures including raised tables.

6 Location of future toilet facility

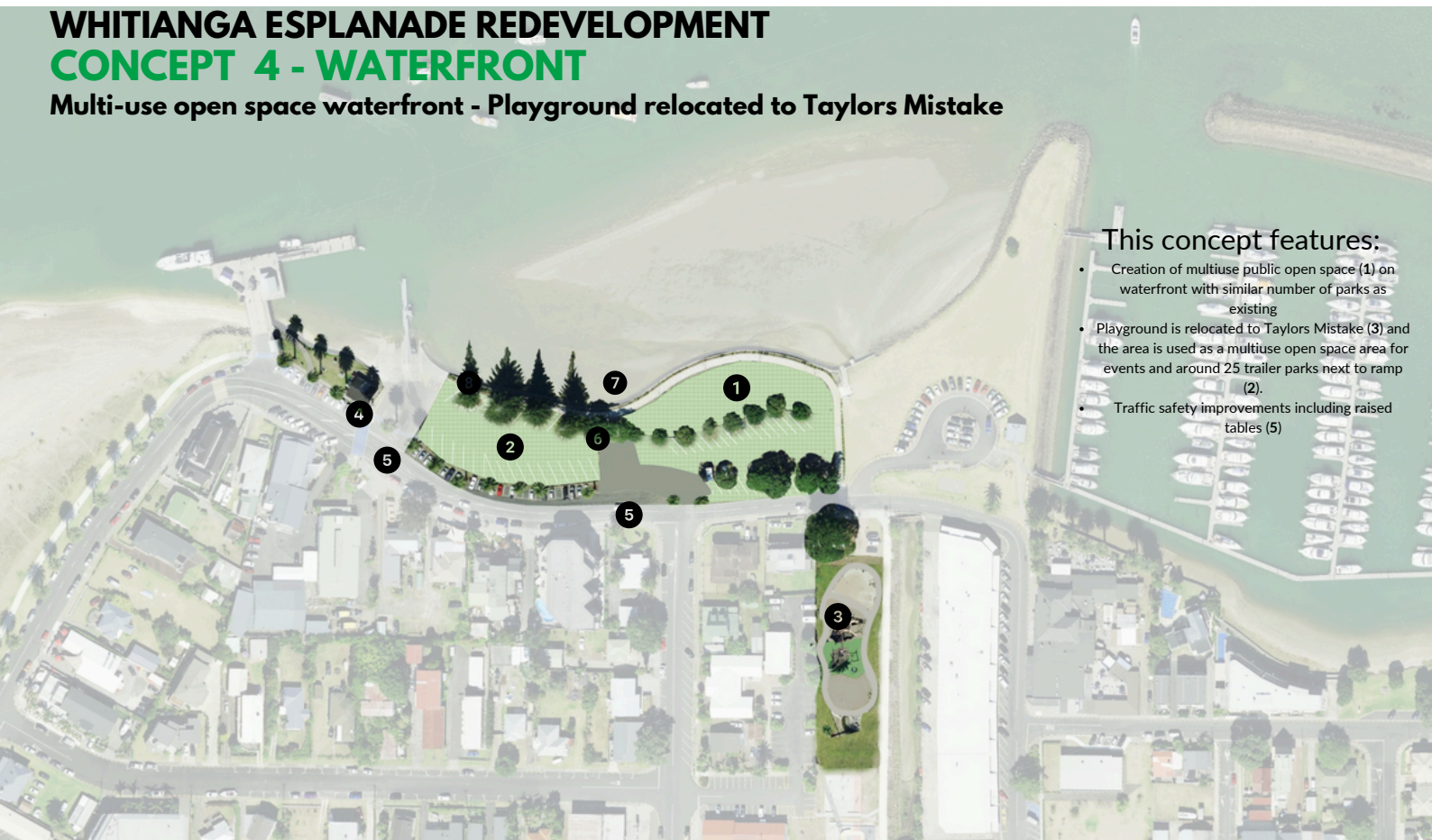
7 Existing toilet block future long term removal

8 Existing trees to remain with possible crown lifting.

WHITIANGA ESPLANADE REDEVELOPMENT

CONCEPT 4 - WATERFRONT

Multi-use open space waterfront - Playground relocated to Taylors Mistake



This concept features:

- Creation of multiuse public open space (1) on waterfront with similar number of parks as existing
- Playground is relocated to Taylors Mistake (3) and the area is used as a multiuse open space area for events and around 25 trailer parks next to ramp (2).
- Traffic safety improvements including raised tables (5)

1 Multiuse open space reserve for events, parking and amenity. Surface to be grass pavers or reinforced grass. No change to existing parking numbers.

2 Multiuse open space area for events and trailer parks on grass pavers.

3 Relocation of playground to Taylors Mistake with reuse of equipment.

4 Retain existing toilet

5 Traffic safety measures including raised tables.

6 Access and short term parking for proposed new pier

7 Location of proposed public pier.

WHITIANGA ESPLANADE REDEVELOPMENT CONCEPT 5 - ROBINSON BOAT RAMP

Upgrade existing ramp, jetty and summer overflow parking at Hilton Reserve



This concept features:

- Upgrade and realignment of boat ramp with additional pontoons (1)
- Improve delineation of existing trailer parking area (2) on existing grass reserve.
- New jetty and pontoon (3) to reduce walking distance for trailer parking and retrieval.
- Summer overflow parking at Hilton Reserve (4) with localised drainage improvements. Turf surface to match surrounding field.
- Cultural narrative / artwork (6)

1 Upgrade and realignment of ramp with addition pontoons

7 Footpath to overflow parking

2 Trailer park line marking with existing grass reserve.

3 New jetty and pontoon to aid trailer boat parking logistics.

4 Hilton Reserve summer overflow parking . Localised field drainage improvement with turf line marking.

5 Existing trees to remain with some crown lifting.

6 Cultural narrative / artwork.

WHITIANGA ESPLANADE REDEVELOPMENT CONCEPT 6 - ROBINSON BOAT RAMP

Upgrade existing ramp and mark carparks on grass surface - No overflow parking at Hilton Reserve



1 Upgrade and realignment of ramp with addition pontoons

2 Trailer parking on grass reserve with possible line marking.

3 Existing trees to remain with some crown lifting.

4 Hilton Reserve - no changes

5 Cultural narrative / artwork.