

An aerial photograph of the Whitianga Esplanade waterfront. The image shows a curved coastline with a marina area containing several boats, a paved road with parked cars, and various buildings. In the background, there are green hills and mountains under a cloudy sky. A semi-transparent white text box is overlaid on the upper portion of the image, containing the title and date.

# Whitianga Esplanade Waterfront User Workshop 3

26 August 2024

# User Group – Tonight's Run Sheet

---

- **Welcome**
- Tonight's key focus on the **Trailer Boat Facilities**
- **Quick recap on Separate Jetty / Pontoon Redevelopment**
- **MAIN EVENT** – Trailer boat launching and parking - concepts and ideas presentation and focus group feedback discussion
- Wrap up around 7:30pm



# Quick Recap from last Workshop

---

The focus user group session was held June 2024

## Key issues and challenges:

- Insufficient wharf / pontoon berth capacity
- Conflicting activities on the same wharf
- Growing trailer boat parking demands on limited waterfront space
- Space for events and public amenity
- Playground/ boat ramp/ toilet location impacting on child / pedestrian safety
- Need to cater for public amenity and open space
- Traffic safety concerns

## The key desires and ideas :

- Separate commercial and public activities
- Additional wharf and pontoon berth spaces
- Creating a dedicated ferry berth
- Address trailer boat demand
- Relocate and / or manage trailer boat activities
- Cater for events
- Cater for fish weighing
- Retain commercial fishing wharf on existing wharf

# WHITIANGA ESPLANADE / WATERFRONT

## INCREASE WHARF FACILITY CAPACITY

### CONCEPT 1 - NEW PUBLIC WHARF AND FISHING WHARF

LEGEND:

— PROPERTY BOUNDARY

- ① PUBLIC PIER
- ② FISHING WHARF (COMMERCIAL AND RECREATIONAL)
- ③ WHARF FISH SALES
- ④ RELOCATED EXISTING PONTOON TO NEW WHARF
- ⑤ NEW FLOATING PONTOON
- ⑥ SHELTER / TICKETING CENTER FOR FERRY
- ⑦ SWIM PLATFORM

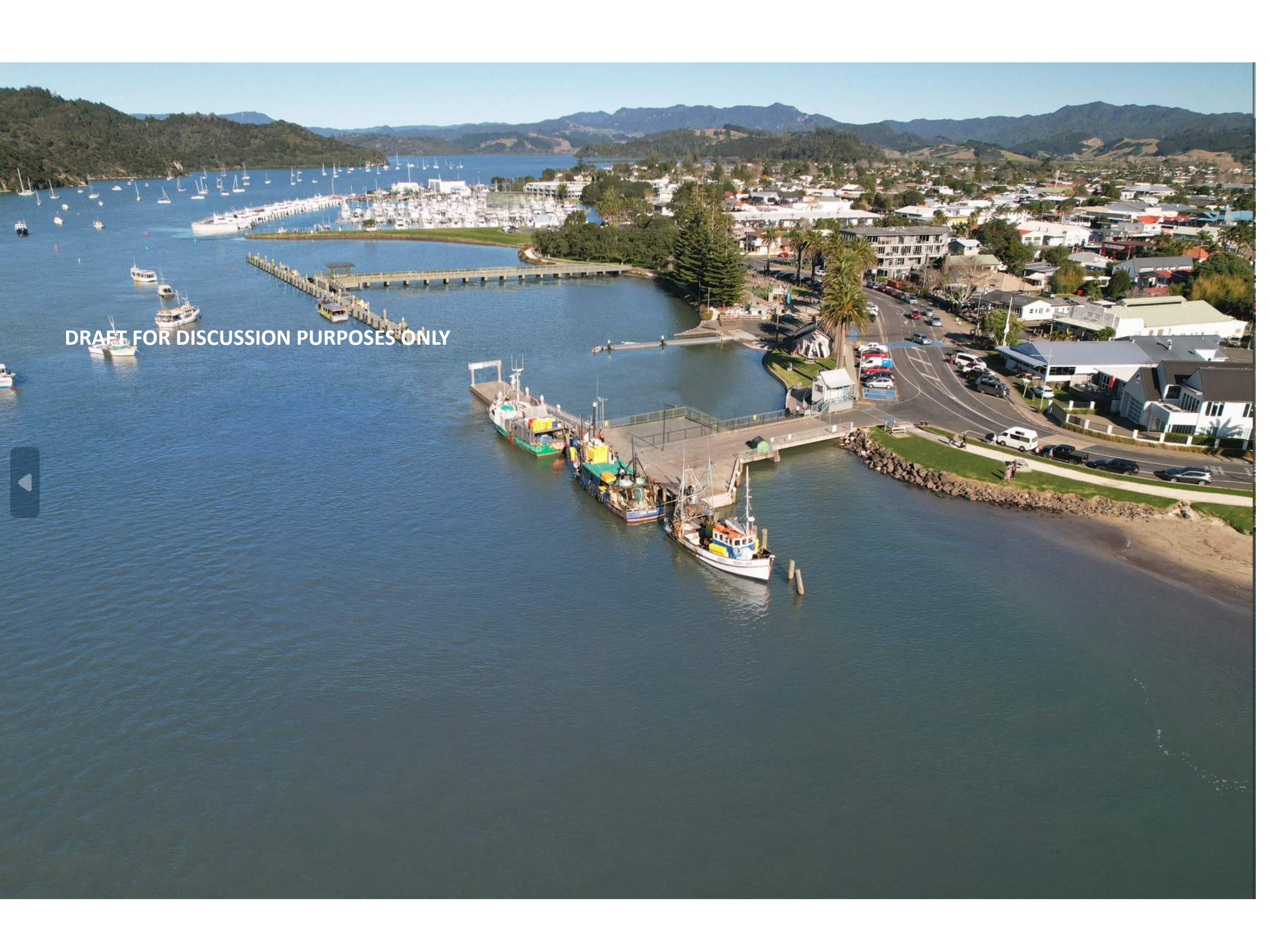
1:500 @ A3  
1:1000 @ A3



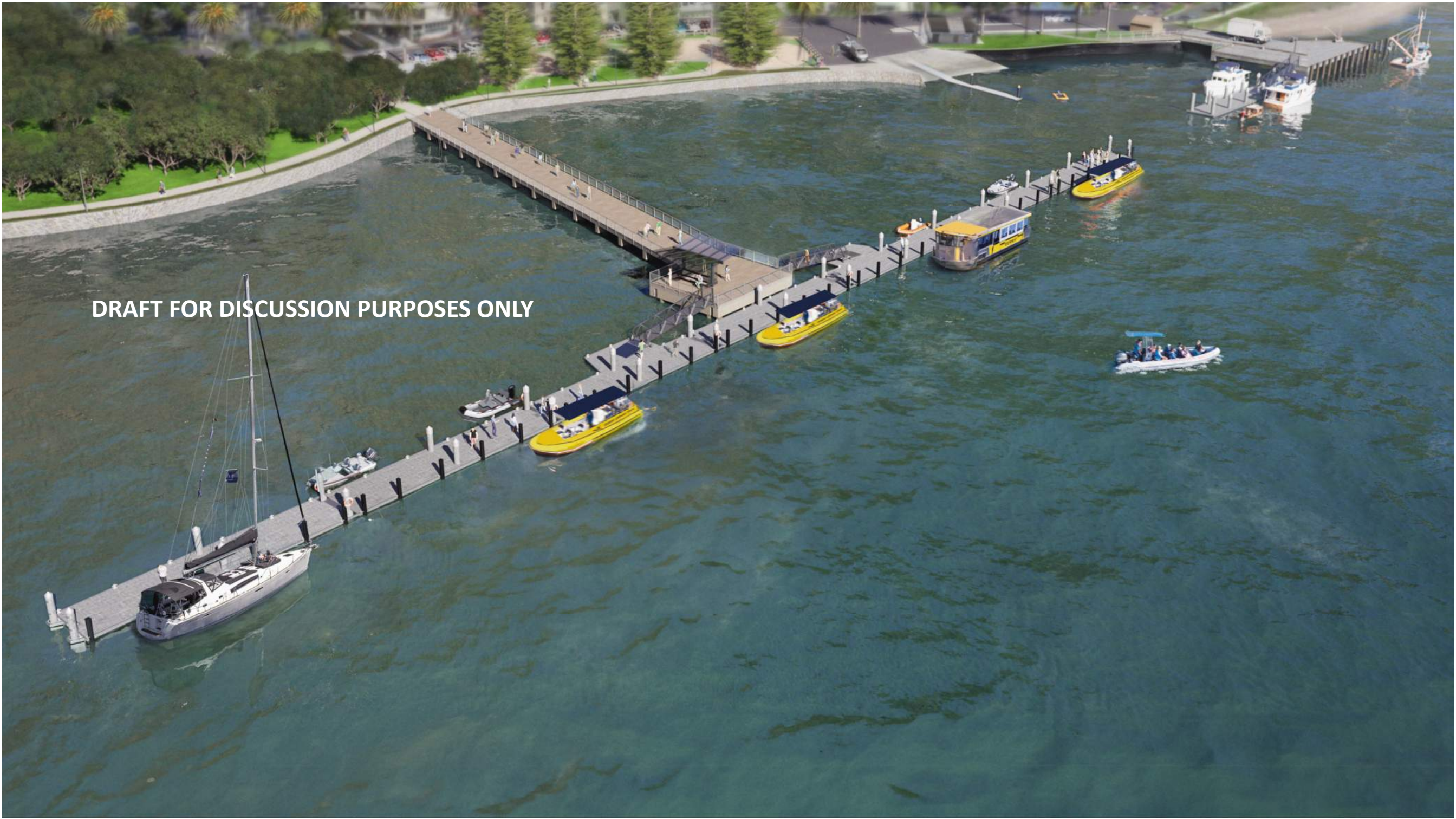
DRAFT FOR DISCUSSION PURPOSES ONLY



DRAFT FOR DISCUSSION PURPOSES ONLY



DRAFT FOR DISCUSSION PURPOSES ONLY



DRAFT FOR DISCUSSION PURPOSES ONLY



DRAFT FOR DISCUSSION PURPOSES ONLY





DRAFT FOR DISCUSSION PURPOSES ONLY



# WHITIANGA ESPLANADE / WATERFRONT



## MULTI USE / EVENT SPACE

**LEGEND:**

— PROPERTY BOUNDARY



- ① MULTI USE SPACE FOR EVENTS / EVENT PARKING (OPTION 1)
- ② MULTI USE SPACE FOR EVENTS / EVENT PARKING (OPTION 2)
- ③ MULTI USE SPACE FOR EVENTS / EVENT PARKING (OPTION 3)
- ④ CAR AND TRAILER PARKING
- ⑤ PUBLIC PIER FOR EVENT SPACE WITH SHELTER
- ⑥ SWIM PLATFORM

**DRAFT FOR DISCUSSION PURPOSES ONLY**





# Existing Boat Ramps and Parking Arrangement

---

- 1. Whitianga Public Boat Ramp with a pontoon with TCDC ramp pass and parking options**
  - 35 Trailer parks on waterfront
  - 22 parks during summer at Taylor's Mistake
  - Option to launch only and take trailer home (lower fee)
- 2. Whitianga Marina – private membership with limited parking**
  - Capped at 250 subscription members – waiting list
- 3. Dundas Street Public Boat Ramp (tidal and suits only small craft)**
  - 7-10 Trailer parks on waterfront
  - Free
  - Not feasible to upgrade to all tide
- 4. Robinson Rd Public Boat Ramp with a pontoon with parking options**
  - Around 30-40 Trailer parks on waterfront reserve
  - Option to launch only and take trailer home (lower fee)

# Welcome to Robinson Road Boat Ramp

## RAMP PASS REQUIRED



DAILY

**\$17 Day  
Launch Only  
Pass**

LAUNCH ONLY:

Launch and retrieve your vessel.  
No parking in designated boat trailer parking areas.

**\$50 Annual  
Launch Only  
Pass**

**\$33 Day  
Combo Pass  
- Launch & Park**

COMBO PASS:

Launch and retrieve your vessel and park in a designated boat trailer parking area. Council cannot guarantee parking availability.

**\$115 Annual  
Combo Pass  
- Launch & Park**

ANNUAL

SCAN QR CODE  
TO PURCHASE  
PASSES



PAY HERE



PAYMENT:  
Scan this QR code to buy a pass  
or buy one from a Council office  
during opening hours:

Whitianga - 10 Monk St  
Whangamata - 620 Port Rd  
Coromandel Town - 355 Kapanga Rd  
Thames - 515 Mackay St



Boat Ramp

No Parking area for vehicles  
with boat trailers attached or  
boat trailers.

Authorised parking for those  
that have purchased a Combo  
pass to launch and park.

**SITE HAZARDS:**

- Slippery ramp and surfaces
- Moving vehicles and vessels
- Trip hazards
- Biofouling (sharp shells etc).

**CONDITIONS OF USE:**

- No refuelling on boat ramps
- No painting or maintenance of vessels on boat ramps
- All commercial users to seek approval from Council
- 5 knot speed limit within 200m of boat ramp / pontoon
- No jumping, swimming or diving from (or within 50m of) a boat ramp or pontoon while a boat is leaving or approaching the facility
- Fishing only permitted if not interfering with vessel launching / retrieving or commercial operations
- No dumping of fish frames or other rubbish.

Please report issues to TCDC  
on 07 868 0200 or email  
customer.services@tcdc.govt.nz

Fees collected from launching  
and parking supplement  
harbour facilities within the  
local Community Ward.



# Boat Ramp Passes

# WHITIANGA ESPLANADE DEVELOPMENT

**DRAFT - FOR DISCUSSION ONLY**

## EXISTING RAMPS



- KEY:**
- ① PROPOSED NEW WHARF AND FLOATING PONTOON
  - ② TAYLORS MISTAKE CAR/TRAILER PARKING (22 SPACES)
  - ③ LYON PARK
  - WHITIANGA RAMP - TAYLORS MISTAKE (2 MIN WALK)
  - WHITIANGA RAMP - JETTY (2 MIN WALK)
  - WHITIANGA RAMP - LYON PARK (10 MIN WALK)

### Welcome to Robinson Road Boat Ramp

RAMP PASS REQUIRED

DAILY	\$17 Day Launch Only Pass	LAUNCH ONLY: Launch and retrieve your vessel. No parking in designated boat trailer parking areas.	\$50 Annual Launch Only Pass	ANNUAL
	\$33 Day Combo Pass - Launch & Park	COMBO PASS: Launch and retrieve your vessel and park in a designated boat trailer parking area. Council cannot guarantee parking availability.	\$115 Annual Combo Pass - Launch & Park	



# Concept to free up waterfront and increase trailer parking

## 1. Whitianga Public Boat Ramp with a pontoon with TCDC ramp pass and parking options

- Keep boat ramp open with narrower entrance
- ~~35 Trailer parks on waterfront~~ Relocate summer demand to Robinson Rd / Hilton Reserve overflow
- 22 parks during summer at Taylor's Mistake – Keep and Upgrade to all season surface and improved marking
- Option to launch only and take trailer home (lower fee) – Add pontoon short stay berths on inside of new pontoon to promote offsite trailer parking

## 2. Whitianga Marina – private membership with limited parking

- Capped at 250 subscription members – waiting list (Status Quo)

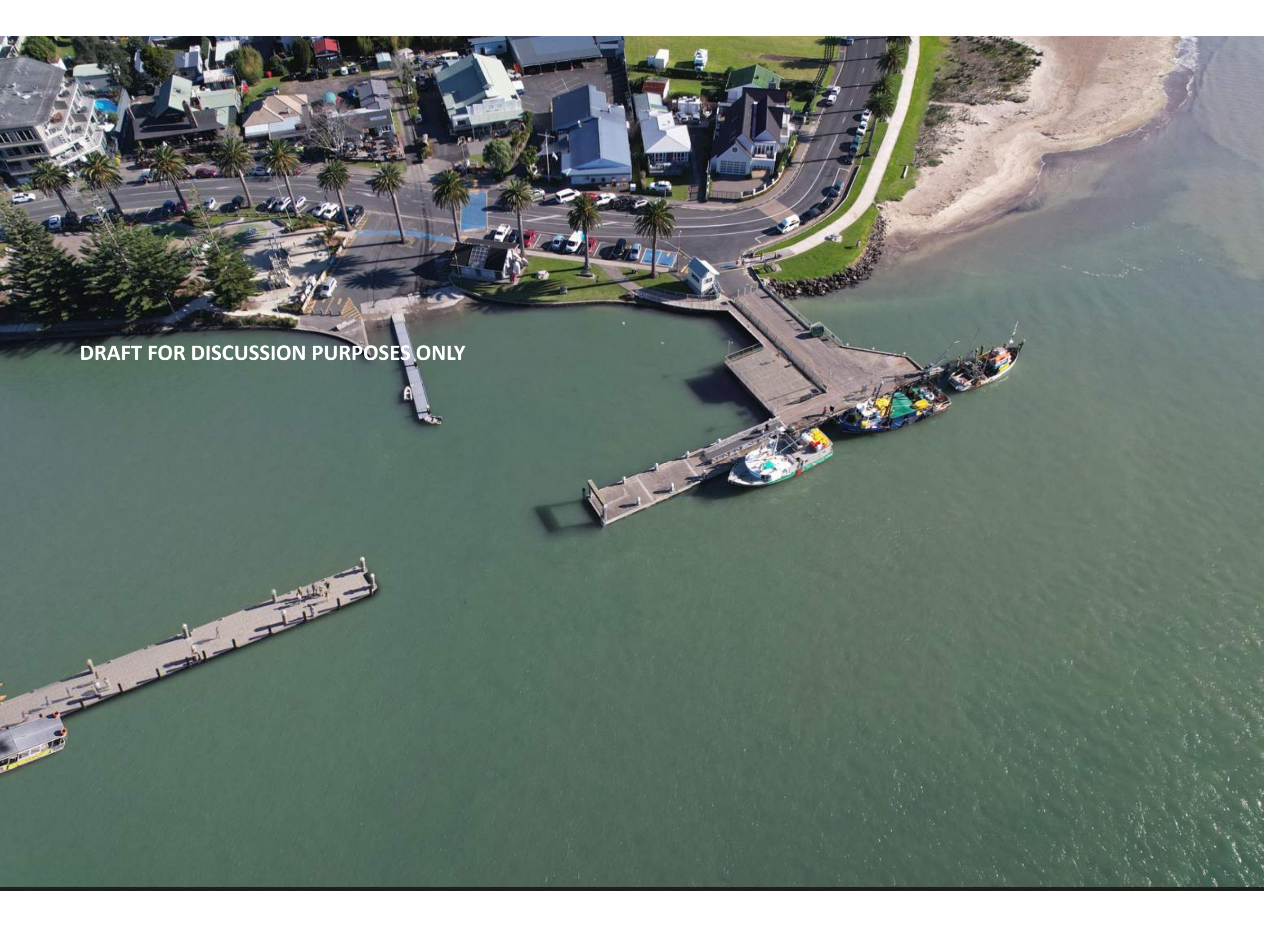
## 3. Dundas Street Public Boat Ramp (tidal and suits only small craft) (Status Quo)

- 7-10 Trailer parks on waterfront
- Free
- Not feasible to upgrade to all tide

# Concept to free up waterfront and increase trailer parking

## 4. Robinson Rd Public Boat Ramp with a pontoon with parking options

- Around 30-40 Trailer parks on waterfront reserve **Increase parking spaces to 42 along reserve.**
- Option to launch only and take trailer home (lower fee) **Promote by adding extra pontoon and launch lane. Also add new jetty and pontoon for collection and drop off of passengers.**
- **ADD Around 44+ Trailer parks on Hilton Reserve as peak summer overflow and fishing events**



DRAFT FOR DISCUSSION PURPOSES ONLY



# WHITIANGA ESPLANADE DEVELOPMENT

**DRAFT - FOR DISCUSSION ONLY**

## TAYLORS MISTAKE



- KEY:
- ① ENTRANCE/EXIT
  - ② CAR/TRAILER PARKING (22 SPACES)
  - ③ TURNING AREA



WHITIANGA BOAT RAMP -  
TAYLORS MISTAKE - 2 MIN  
(180m)

TAYLORS MISTAKE  
POTENTIAL PARKING AREA  
22 CAR/TRAILER SPACES

WHITIANGA BOAT RAMP  
PUBLIC ACCESS  
ALL TIDE

WHITIANGA BOAT RAMP -  
EXISTING PARKING - 1 MIN  
(80m)

EXISTING PARKING AREA  
35 SPACES

LYON PARK - WHITIANGA  
BOAT RAMP - 10 MIN (800m)

# WHITIANGA ESPLANADE DEVELOPMENT

**DRAFT - FOR DISCUSSION ONLY**

## HILTON PARK



KEY: ① CAR/TRAILER PARKING (44 SPACES)

② TRAILER BOAT PARKING

③ RIGGING AREA

④ JETTY WITH FLOATING PONTOON

⑤ BOAT RAMP WITH FLOATING PONTOON

⑥ PARKING ENTRANCE

⑦ PARKING EXIT

--- HILTON ROAD - BOAT RAMP (5 MIN WALK)

--- HILTON ROAD - JETTY (3 MIN WALK)

--- JETTY - BOAT RAMP (2 MIN WALK)

NOTE: FIELD DRAINAGE AND SURFACING TO BE ADDRESSED

# WHITIANGA ESPLANADE DEVELOPMENT

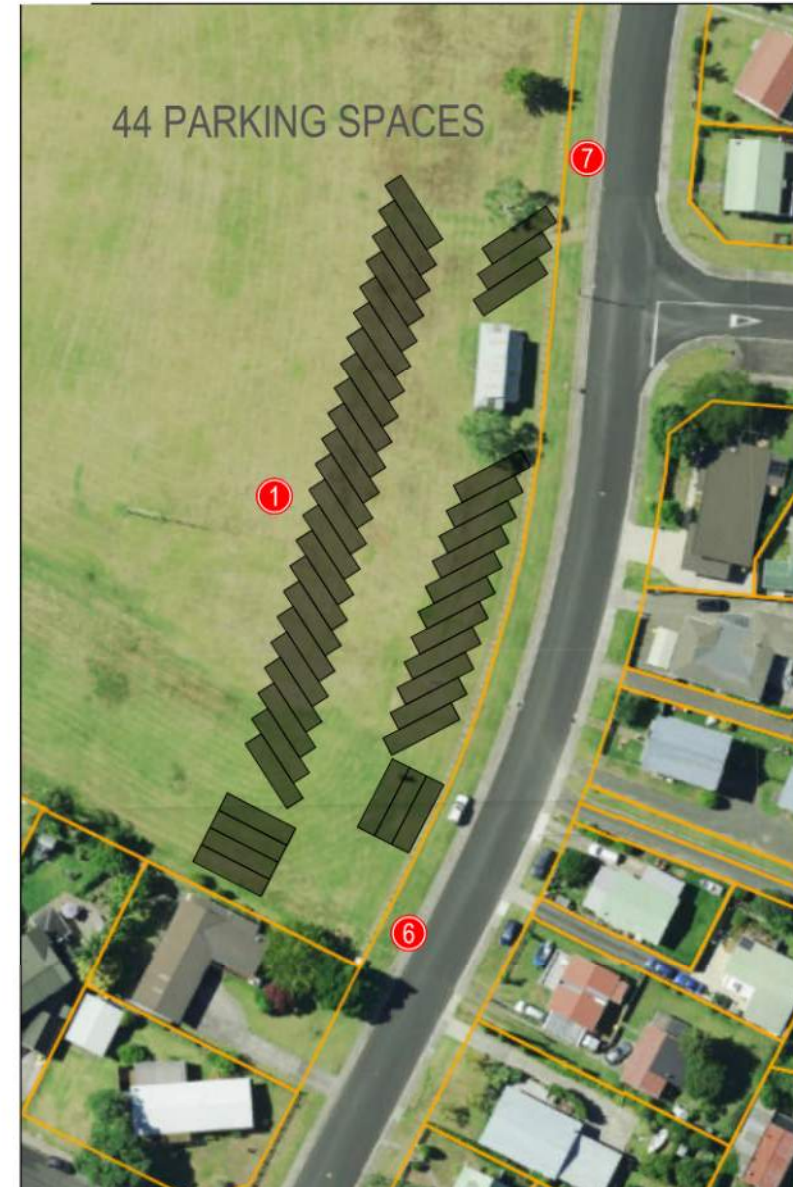
**DRAFT - FOR DISCUSSION ONLY**

## ROBINSON ROAD



- KEY:
- ① RAMP AREA
  - ② CAR/TRAILER PARKING (42 SPACES)
  - ③ RIGGING AREA
  - ④ JETTY
  - ⑤ GANGWAY
  - ⑥ FLOATING PONTOON

DRAFT - FOR DISCUSSION ONLY



- KEY:**
- ① CAR/TRAILER PARKING (44 SPACES)
  - ④ JETTY WITH FLOATING PONTOON
  - ② TRAILER BOAT PARKING
  - ⑤ BOAT RAMP WITH FLOATING PONTOON
  - ③ RIGGING AREA
  - ⑥ PARKING ENTRANCE
  - ⑦ PARKING EXIT

NOTE: FIELD DRAINAGE AND SURFACING TO BE ADDRESSED



Thank you

---

